



Fill level measurement



Type:
SRK 600 / 601

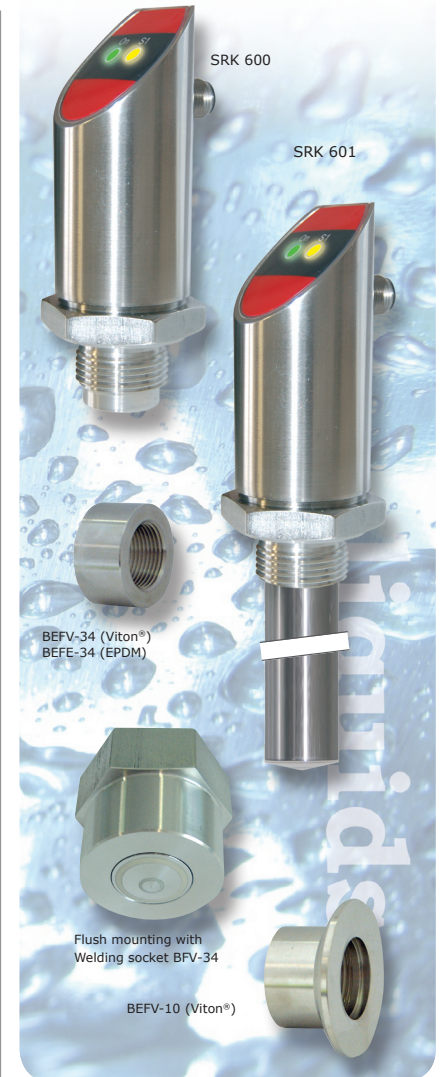
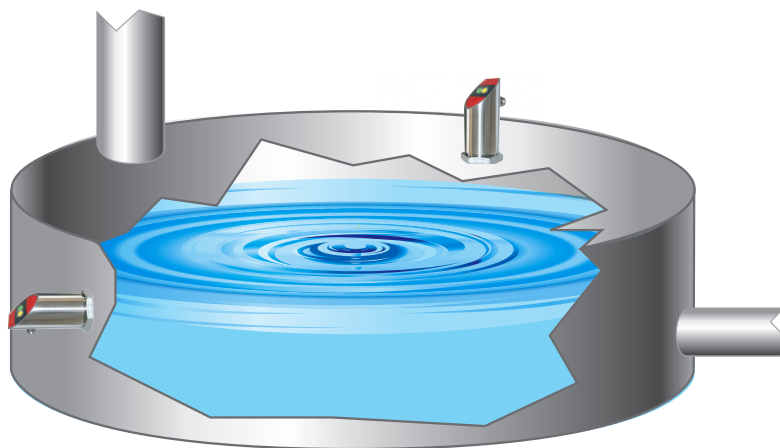
Fill level limit switch – compensated for fill level control in conductive liquids, sludge's and pastes; medium temperature: -40...+150°C; pressure: -1...25 bar

Description

The compact level switch works in all electrically conductive liquids which do not form an insulating rudiment. Adjustment is not necessary. A compensation electrode automatically eliminates influences of solid coatings on the circuit. The SRK provides a safe, uncomplicated problem solution for monitoring of levels and for dry run protection for pumps.

Possible process connections are thread connections, various hygienic connections that are seal gap-free and front flush.

With the SRK highest hygienic requirements can be met, because no mechanical parts such as e.g. electrode rods or forks protrude in the tank or the pipeline. The SRK-601 with tube extension is intended to be used in tanks where the limit switch only can be installed from above but the switching point should be below.



Application

- Full resp. empty signal in pipelines and tanks
- Dry run protection of pumps
- Optimal cleanability

Your benefits

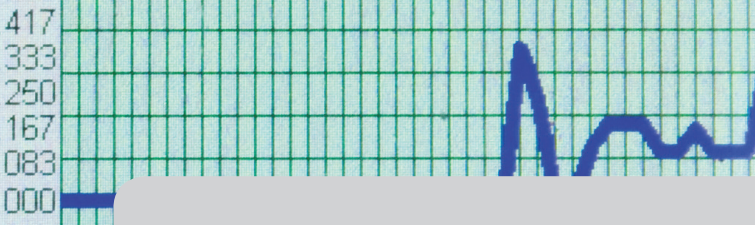
- *High-temperature version* up to 150 ° C medium temperature
- Absolute frontflush installation
- Full flow in pipelines
- Active build-up compensation for sticky and viscous media
easy commissioning without adjustment

Specials

flush mounted	process temperature 150°C
coat compensation	hygienic design
CIP SIP capable	no calibration

Order code. page |04|



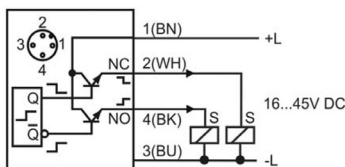


Technical data

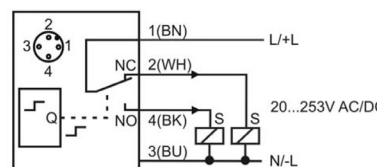
Technical data	
Supply:	Type GA: 16...45V DC Type WB: 20...253V AC/DC
Permitted supply voltage:	Type GA: 16 V up to 45 V DC reverse polarity protected Type WB: 20 V up to 253 V AC/DC 48...62 Hz reverse polarity protected
Power consumption:	Type GA: ≤ 1 W Switch output in idle mode Type WB: ≤ 1 VA / 1 W
Residual ripple:	Type GA: ≤ 2 VSS Condition: within the permitted supply voltage range
Overvoltage category:	II according to DIN EN 61010-1
Protection:	II double or reinforced insulation
Isolation voltage:	2kV~ Auxiliary power / switch output against electrode circuit
Type GA – PNP-switch output	
Function:	PNP transistor output, contact + L
Output voltage:	$V_{OUT} \geq V_{+L} - 2 V$
Output current:	≤ 500 mA current limited, short circuit predicted
Reverse current:	≤ 100 μA current limited, short circuit predicted
Rise time:	< 30 μs $R_L < 3 k\Omega$ resp. $I_L > 4,5 mA$
Switching cycles:	≥ 100.000.000
Type WB – relay output	
Function:	Changeover, contact L / L +
Contact data:	≤ 2 A – 62,5 VA / 60 W (at resistive load) ≥ 100 μV
Switching cycles:	≥ 100.000 at maximum contact load
Electrode circuit – measuring circuit	
Output voltage:	potential free AC-voltage
Output data:	1 VSS ± 0,2 V / ≤ 5 kHz ± 200 Hz / ≤ 5 mA
Measurement Range:	≥ 7,5 μS/cm
Step response time:	1s ± 0,4s

Connection SRK-600

Connection Type GA

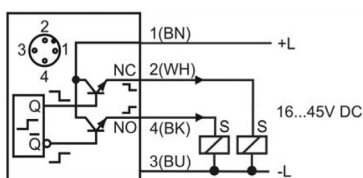


Connection Type WB

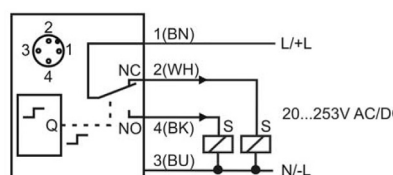


Connection SRK-601

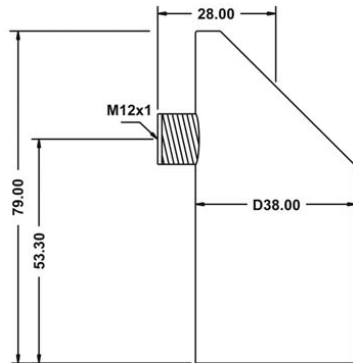
Connection Type GA



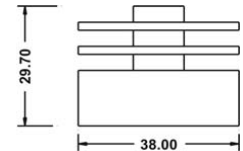
Connection Type WB



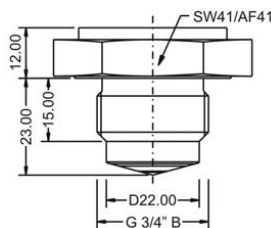
Anschlussgehäuse



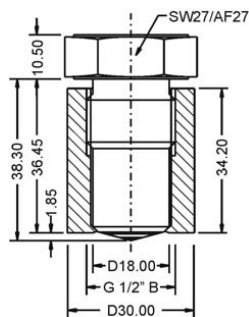
Temperatorkoppler
für erweiterten Temperaturbereich
- 25/40°C...+150°C (optional)



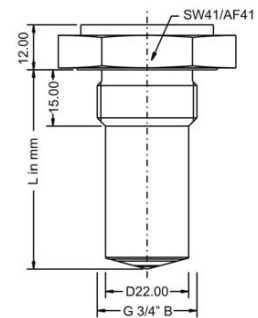
SRK – 600
Typ S 8
G 3/4"
frontbündig



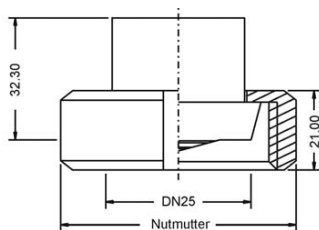
SRK – 600
Typ S 6
G 1/2"
metallisch dichtend
Einschweißmuffe SEM-22



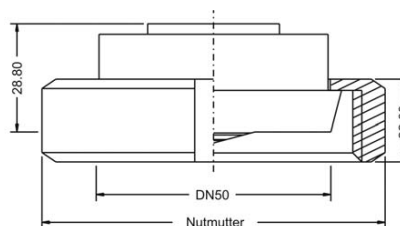
SRK – 601
Typ S 8
G 3/4"
Rohrverlängerung



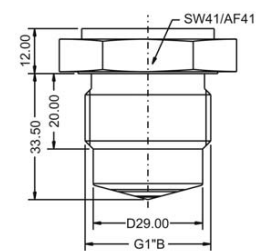
SRK – 600
Typ S R
Milchrohr
DN25



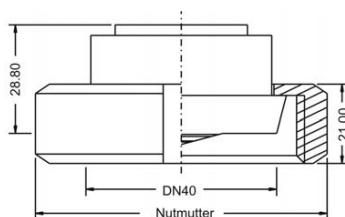
SRK – 600
Typ S M
Milchrohr
DN50



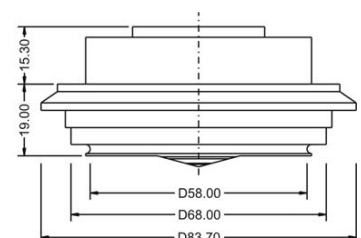
SRK – 600
Typ S 5
G 1"
frontbündig



SRK – 600
Typ S N
Milchrohr
DN40



SRK – 600
Typ S O
Varivent
68mm



Rohrverlängerung

Order code

Model
S Standard

Process connection
 8 G $\frac{3}{4}$ " B; DIN EN ISO228-1, flush mounting in welding socket BEFV-34 / BEFE-34
 6 G $\frac{1}{2}$ " B DIN EN ISO228-1 metal seated mounting in welding socket SEM-22 / SEM-42
 5 G1" B; DIN EN ISO228-1, flush mounting in welding socket BEFV-10
 O Varivent® 68 mm DN40-80/DN1 $\frac{1}{2}$ "..6", PN25 DN100/DN4", PN20 DN125/DN6", PN10
 R Milk tube DN 25 DIN 11851
 N Milk tube DN 40 DIN 11851
 M Milk tube DN 50 DIN 11851
 Y Other process connection

Process temperature
 0 Standard -40°C up to +100°C
 1 Advanced -40°C up to +150°C, with Temperature decoupler

Electronic - output
 GA DC voltage 16...45 V DC; PNP-switch output; 3-wire technology
 WB Universal voltage 20...253 V AC/DC; relay output; 3-wire technology

Electrical connection
S Plug M12x1

Order code

SRK-600	S					S
----------------	---	--	--	--	--	---

Front-flush installation!
Therefore, no disturbing parts in containers and pipes

Model
S Standard

Process connection
 8 G $\frac{3}{4}$ " B; DIN EN ISO228-1
 Y Other process connection

Process temperature
 0 Standard -25°C up to +100°C
 1 Advanced -25°C up to +150°C with Temperature decoupler

Electronic - output
 GA DC voltage; 16...45 V DC; PNP-switch output; 3-wire technology
 WB Universal voltage; 20...253 V AC/DC; relay output; 3-wire technology

Electrical connection
S Plug M12x1

Length L in mm
(price per 100mm)

Order code

SRK-601	S					S	mm
----------------	---	--	--	--	--	---	----

Equipment

Order information
 BEFV-34
 BEFE-34
 BEFV-10

Model
 Welding socket G $\frac{3}{4}$ " Viton®
 Welding socket G $\frac{3}{4}$ " EPDM
 Welding socket G1", ausrichtbar

LKZ0405 PUR-AS
 BKZ0412 VA

Connection cable 5 m, 4-pole, shielded
 Kabeldose

