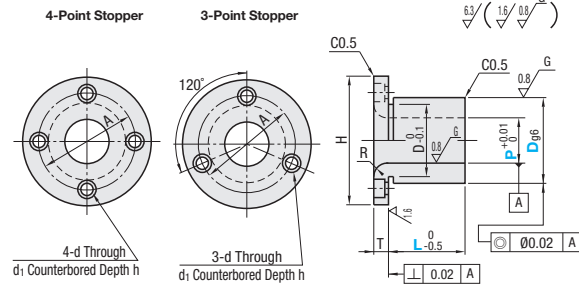


Bushings for Locating Pins

Flanged



Material	Surface Treatment	Hardness	Type			
			P Fixed and L Selectable	P, L Configurable	4-Point Stopper	3-Point Stopper
EN 1.2510 Equiv.	Black Oxide	Treated Hardness: 56 - 60HRC	JBY	JBYF	JBYFB	JBT
EN 1.4301 Equiv.	Electroless Nickel Plating	-	JBYM	JBYFM	JBYFMB	JBTM
EN 1.4125 Equiv.	-	Treated Hardness: 50HRC	-	JBYFC	-	-



P Fixed and L Selectable JBT is available for P dimension with * 1 mark only. L dimensions marked with *2 are not available for JBYM.

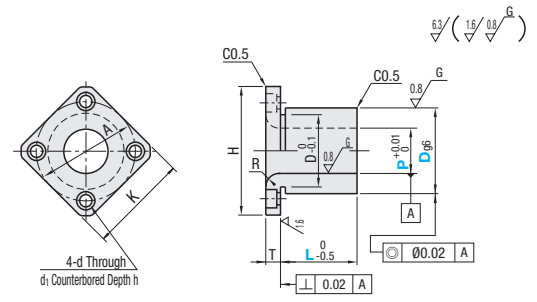
Part Number	Type	P	L Selection	R	H	T	Dg6	A	d	d1	h	Unit Price			
												JBY	JBYM	JBT	
5	JBY JBYM JBT	8	10 12 16 20	1	25	5	10	-0.005 -0.014	17	3.3	6.5	3.5	-	-	-
*1 6		8 10 12 16	-										-	-	
*1 8		10 12 16 20	-										-	-	
*1 10		12 16 20 25 30	-										-	-	
*1 12		12 16 20 25 30	-										-	-	
*1 13		12 16 20 25 30	-										-	-	
*1 15		12 16 20 25 30	-	-	-										
16		16 20 25 30 35	2	22	40	6	30	-0.007 -0.020	34	4.5	8	4.5	-	-	-
*1 20		20 25 30 35 40											-	-	-
25		20 25 30 35 40	3	22	56	8	30	-0.009 -0.025	46	6.6	11	6.5	-	-	-
35	20 25 30 35 40	-											-	-	

P and L Configurable L+T≤Px3.0

Part Number	Type	Dg6	P 0.01mm Increment	L 0.1mm Increment	R	H	T	A	d	d1	h	Unit Price			
												JBYF	JBYFB	JBYFM	JBYFS
10	JBYF JBYFB JBYFM JBYFS JBYFC	-0.005 -0.014	4.00-6.50	5.0-15.0	1	25	5	17	3.3	6.5	3.5	-	-	-	
12		6.00-8.50	-									-	-		
15		8.00-10.50	-									-	-		
18		10.00-12.50	-									-	-		
20		12.00-13.50	-									-	-		
22		12.00-13.50	-									-	-		
25		13.00-15.50	10.0-35.0	2	40	6	30	-0.007 -0.020	34	4.5	8	4.5	-	-	
26		15.00-16.50											-	-	-
30		16.00-20.50	12.0-50.0	3	56	8	42	-0.009 -0.025	46	6.6	11	6.5	-	-	
35		20.00-25.00											-	-	-



Material	Surface Treatment	Hardness	Type	
			P Fixed and L Selectable	P, L Configurable
EN 1.2510 Equiv.	Black Oxide	Treated Hardness: 56 - 60HRC	JBS	JBSF
EN 1.4301 Equiv.	Electroless Nickel Plating	-	JBSM	JBSFM
EN 1.4125 Equiv.	-	Treated Hardness: 50HRC	-	JBSFC



P Fixed and L Selectable L dimensions marked with * are not available for JBSM.

Part Number	Type	P	L Selection	R	H	K	T	Dg6	A	d	d1	h	Unit Price	
													JBS	JBSM
8	JBS JBSM	10	12 16 20	2	28	22	5	12	20	3.3	6.5	3.5	-	-
12		12 16 20 25 30	-										-	-
15		12 16 20 25 30	-										-	-
18		12 16 20 25 30	-										-	-
20		16 20 25 30 *35	-										-	-
25		20 25 30 *35 40	-										-	-
35		20 25 30 *35 40	3	22	56	8	30	-0.009 -0.025	46	6.6	11	6.5	-	-
46		20 25 30 *35 40											-	-

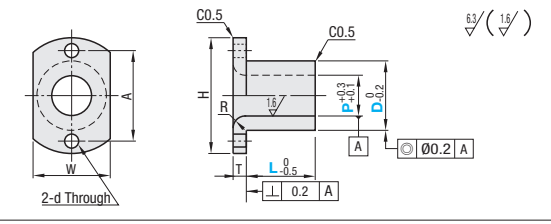
P and L Configurable L+T≤Px3.0

Part Number	Type	Dg6	P 0.01mm Increment	L 0.1mm Increment	R	H	K	T	A	d	d1	h	Unit Price			
													JBSF	JBSFB	JBSFM	JBSFS
10	JBSF JBSFB JBSFM JBSFS JBSFC	-0.005 -0.014	4.00-6.50	5.0-15.0	1	25	20	5	17	3.3	6.5	3.5	-	-	-	
12		6.00-8.50	-										-	-		
15		8.00-10.50	-										-	-		
18		10.00-12.50	-										-	-		
20		12.00-13.50	-										-	-		
22		12.00-13.50	-										-	-		
25		13.00-15.50	10.0-35.0	2	40	31	6	30	-0.007 -0.020	34	4.5	8	4.5	-	-	
26		15.00-16.50												-	-	-
30		16.00-20.50	12.0-50.0	3	56	44	8	42	-0.009 -0.025	46	6.6	11	6.5	-	-	
35		20.00-25.00												-	-	-

Features: Economy type is priced up to 49% lower without D/P Dimensions grinding and with the tolerance of P Dimension $+0.3$ / -0.1 and D Dimension 0 / -0.2 .



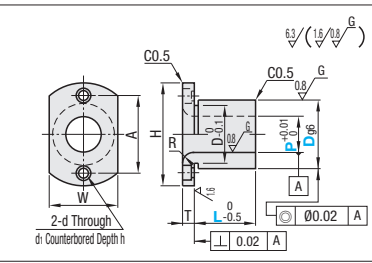
Material	Surface Treatment	Hardness	Type	
			P Fixed and L Selectable	P, L Configurable
EN 1.1191 Equiv.	Electroless Nickel Plating	-	JBOR	JBOM
-	Electroless Nickel Plating	45-50HRC	JBOK	JBON



Part Number	Type	D	P	L	R	H	W	T	A	d	Unit Price			
											JBOR	JBOM	JBOK	JBON
10	JBOR JBOM JBOK JBON	12	4.0-6.5	5-15	1	25	12	17	17	5	-	-	-	-
12		6.0-8.5	-								-	-		
15		8.0-10.5	-								-	-		
16		9.0-11.5	-								-	-		
18		10.0-12.5	-								-	-		
20		12.0-13.5	-								-	-		
22		12.0-13.5	5-35	2	40	20	3	30	6	6	6	-	-	-
25		13.0-15.5										-	-	-
26		15.0-16.5	5-50	3	56	35	5	42	8	46	8	-	-	-
30		16.0-20.5										-	-	-
35	20.0-25.0	-	-	-										



Material	Surface Treatment	Hardness	Type	
			P Fixed and L Selectable	P, L Configurable
EN 1.2510 Equiv.	Black Oxide	Treated Hardness: 56 - 60HRC	JBN	JBNF
EN 1.4301 Equiv.	Electroless Nickel Plating	-	JBNM	JBNFM
EN 1.4125 Equiv.	-	Treated Hardness: 50 - 55HRC	-	JBNFS



P Fixed and L Selectable

Part Number	Type	P	L Selection	R	H	W	T	Dg6	A	d	d1	h	Unit Price		
													JBN	JBNM	
5	JBN JBNM	8	10 12 16	1	25	12	5	10	-0.005 -0.014	17	3.3	6.5	3.5	-	-
6		10 12 16 20	-											-	-
8		10 12 16 20	-											-	-
10		10 12 16 20	-											-	-
12		12 16 20 25 30	-											-	-
13		12 16 20 25 30	-											-	-
15		12 16 20 25 30	2	40	25	6	30	-0.007 -0.020	34	4.5	8	4.5	-	-	
16		16 20 25 30 35											-	-	-
20		20 25 30 35 40	3	56	35	8	30	-0.009 -0.025	46	6.6	11	6.5	-	-	
25		20 25 30 35 40											-	-	-

P and L Configurable L+T≤Px3.0

Part Number	Type	Dg6	P 0.01mm Increment	L 0.1mm Increment	R	H	W	T	A	d	d1	h	Unit Price			
													JBNF	JBNFB	JBNFM	JBNFS
10	JBNF JBNFB JBNFM JBNFS JBNFC	-0.005 -0.014	4.00-6.50	5.0-15.0	1	25	12	5	17	3.3	6.5	3.5	-	-	-	
12		6.00-8.50	-										-	-		
15		8.00-10.50	-										-	-		
18		10.00-12.50	-										-	-		
20		12.00-13.50	-										-	-		
22		12.00-13.50	-										-	-		
25		13.00-15.50	10.0-35.0	2	40	25	6	30	-0.007 -0.020	34	4.5	8	4.5	-	-	
26		15.00-16.50												-	-	-
30		16.00-20.50	12.0-50.0	3	56	35	8	42	-0.009 -0.025	46	6.6	11	6.5	-	-	
35		20.00-25.00												-	-	-

Ordering Example

Part Number	-	P	-	L
JBY6	-	12	-	12
JBSF20	-	P13.00	-	L30.0
JBOR10	-	P5.0	-	L8
JBN10	-	P5.0	-	L10

Alterations

Part Number	-	P	-	L	-	(TKC, RC, FC, RH)
JBNF15	-	P10.0	-	L10.0	-	TKC
JBT20	-	P12.0	-	L12.0	-	FC

Alteration	Code	Spec.
T Tolerance	TKC	Changes the T tolerance from general tolerance to ±0.01. Ordering Code TKC ⊗ Not applicable to P Fixed Type, L Selectable Type and Compact Flange Economy Type.
I.D. Radius R	RC	Machines Radius R on both sides. D10→R1 D12→26→R2 D30, 35→R3 Ordering Code RC ⊗ Applicable to JBNF, JBNFB, JBNFM, JBNFS and JBNFC only
	FC	Cuts one side of flange. Ordering Code FC ⊗ Applicable to JBT and JBTM only
Inner Diameter Radius R	RH	Changes the inner diameter radius R from shoulder side to D dimension end face. Size of R will be the same as R on shoulder side. Ordering Code RH ⊗ Applicable to Compact Flange, Economy Type only. ⊗ (D-P)/2-R≥1.5