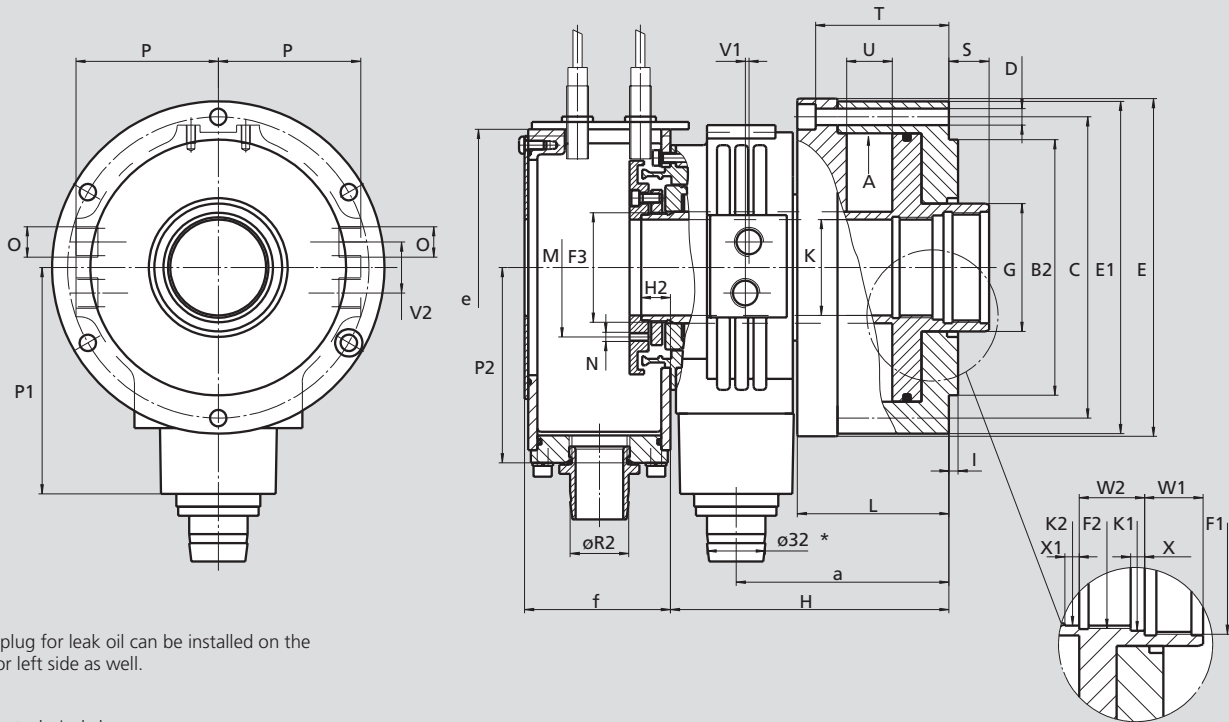


VNK-T2

Open center
rotating hydraulic cylinder

- up to 45 bar
- THROUGH-HOLE \varnothing 37.5 - 127.5 mm
- short design/low mass
- stroke control via proximity switch or linear positioning system



* Drain plug for leak oil can be installed on the right or left side as well.

Subject to technical changes.
For more detailed information please ask for customer drawing.

SMW-AUTOBLOK Type VNK-T2		70-37	102-46	130-52	150-67	170-77	176-82	200-86	225-95	250-110	320-127
A	mm	107	130	147	163	175	180	190	205	220	250
B2 h6	mm	110	130	140	160	160	168	180	210	210	250
C	mm	125	147	165	180	195	205	210	227	240	270
D	mm	6 x \varnothing 9	6 x \varnothing 9	6 x \varnothing 9	6 x \varnothing 11	6 x \varnothing 11	6 x \varnothing 11	6 x \varnothing 11	6 x \varnothing 11	6 x \varnothing 11	6 x \varnothing 13
E	mm	145	165	185	202	217	228	234	249	266	295
E1	mm	140	162	182	197	214	222	228	245	266	290
F1	mm	M44 x 1.5	M55 x 2.0	M60 x 1.5	M75 x 2.0	M85 x 2.0	M90 x 2.0	M95 x 2.0	M105 x 2.0	M120 x 2.0	M135 x 2.0
F2	mm	M42 x 1.5	M50 x 1.5	M55 x 2.0	M72 x 1.5	M80 x 2.0	M85 x 2.0	M90 x 2.0	M100 x 2.0	M115 x 2.0	-
F3	mm	M42 x 1.5	M52 x 1.5	M60 x 1.5	M74 x 1.5	M84 x 1.5	M89 x 1.5	M94 x 2.0	M104 x 2.0	M120 x 2.0	M138 x 2.0
G	mm	50	61	70	85	95	100	105	115	130	145
H	mm	151	152	152	178	178	182.5	203	208	245	265
H2	mm	16	16	16	21	21	24.5	21	21	26	36.5
I	mm	5	5	5	8	8	8	8	8	8	5
through-hole	K	mm	37.5	46.5	52.5	67.5	77	82	86.5	95.5	127.5
	K1 H8	mm	42.5	52.5	57	72.5	82	87	92	102.5	132
	K2 H8	mm	40	47	52.5	69	77	82	87	97	-
	L	mm	83	83	83	95	95	97	107	116	134
	M	mm	\varnothing 53	\varnothing 68	\varnothing 70	\varnothing 91	\varnothing 91	\varnothing 101	\varnothing 116	\varnothing 120	-
	N	mm	M6 (2x)	M6 (2x)	M6 (2x)	M6 (4x)	M6 (2x)	M6 (2x)	M6 (2x)	M6 (2x)	-
oil connections	O	inch	G 3/8"	G 3/8"	G 3/8"	G 3/8"	G 3/8"	G 3/8"	G 3/8"	G 3/8"	G 3/8"
	P	mm	67	76	78	89	94	94	104	112	128
	P1	mm	111	122	128	138	143	143	153	165	198
	P2	mm	100	100	107	127	127	127	127	162	162
standard	R2*	mm	32	32	32	32	32	32	32	32	32
max.	S	mm	24	22	22	25	25	25	31	31	44
	T	mm	67	73	73	83	83	85	95	103	119
piston stroke	U	mm	26	25	25	29	29	29	34	35	40
	V1	mm	9	9	9	10	10	10	11	13	15
	V2	mm	28	28	28	36	36	36	36	36	36
	W1	mm	20	25	25	25	25	25	32	32	32
	W2	mm	22	25	28	28	28	30	30	30	-
	X	mm	5	6	6	6	6	6	6	6	6
	X1	mm	5	20	10.5	6	10	10	6	6	-
	a	mm	114.5	117	117	134	134	136.5	146	180	198
	e	mm	128	128	144	184	184	184	184	230	230
standard	f	mm	65	65	80	90	90	90	90	100	100

* R₂ also \varnothing 40 or \varnothing 60 (optional)