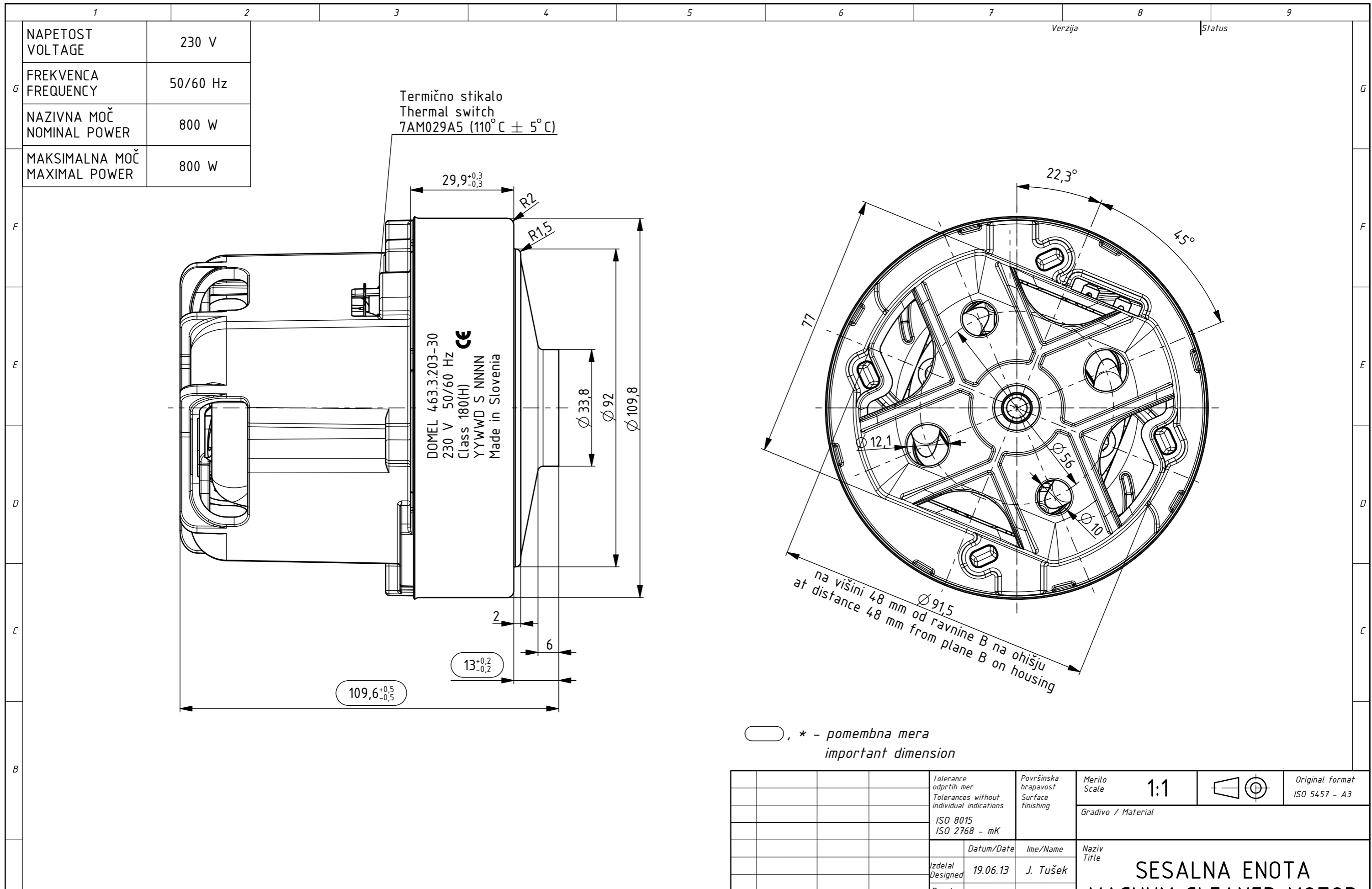


Izdelano s CAD/ProEngineer - ročno spreminjanje ni dovoljeno! Vsak prenos tretjim osebam ali uporaba v nedogovorjene namene ni dovoljena po zakonu o avtorskih pravicah. Made with CAD/ProEngineer - changing is not allowed! Any unauthorized copying of this drawing or unauthorized distribution of the information contained herein is prohibited.



OSNOVNE ZNAČILNOSTI		TYPICAL CHARACTERISTICS	
IZVEDBA	ENOSTOPENJSKA	FAN SYSTEM	SINGLE STAGE
ULEŽAJENJE	DVA KROGLIČNA LEŽAJA	BEARINGS	DUAL BALL
VRSTA PRETOKA	SKOZI MOTOR	DISCHARGE	THRU FLOW
SMER VRTENJA	DESNA	DIRECTION OF ROTATION	CW

Tolerance odprtih mer / Tolerances without individual indications		Površinska hrapavost / Surface finishing		Merilo / Scale	1:1	Original format ISO 5457 - A3
ISO 8015 ISO 2768 - mK				Gradivo / Material		
Datum/Date		Ime/Name		Naziv / Title		
Izdelal / Designed		19.06.13 J. Tušek		SESALNA ENOTA VACUUM CLEANER MOTOR		
Pregl. / Verified		20.03.14 J. Rihtaršič				
Ozn. / Mark		Datum / Date		Koda / Code		List Sheet / Stran / Page
A0 11218		20.03.14 D. Vrhunc		463.3.203-30		3+ / 1
DOMEL® Otoki 21, 4228 Železniki, Slovenija				4633203030_SESALNA_ENOTA		